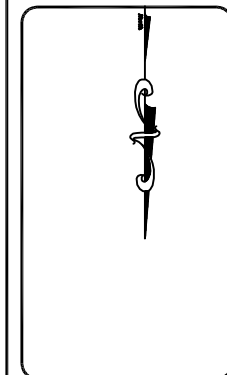
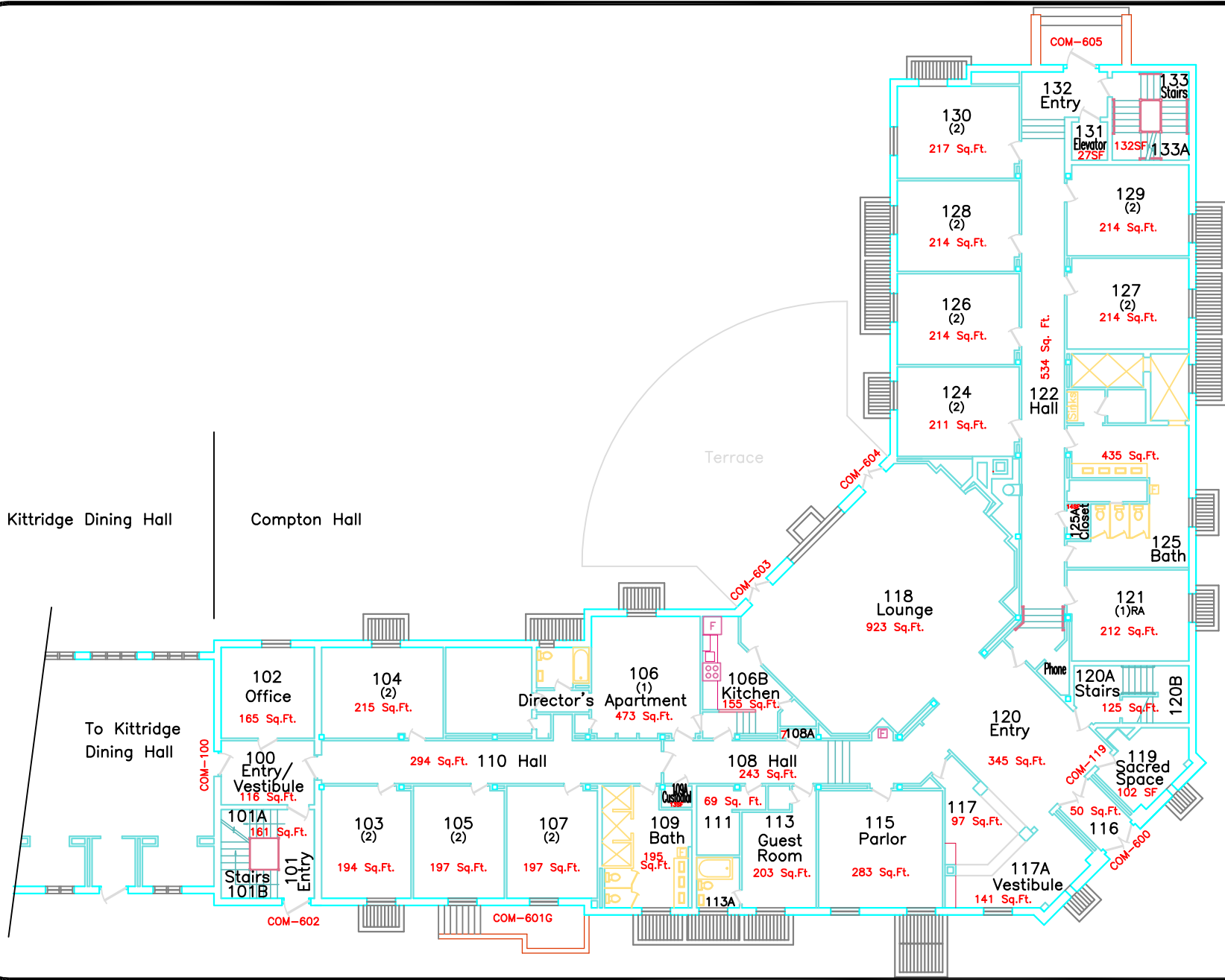


Date	January, 2008	Sheet	
Project	BINDER	1 OF 5	
Scale	1:6 ~ (1:20)		
Building Designation COM			
No.	Revision/Issue	Date	

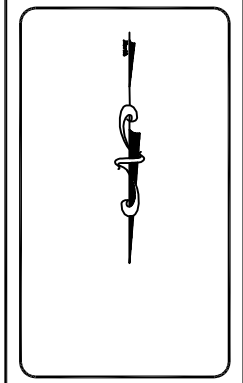
COMPTON HALL
Basement
1327 Beall Ave.

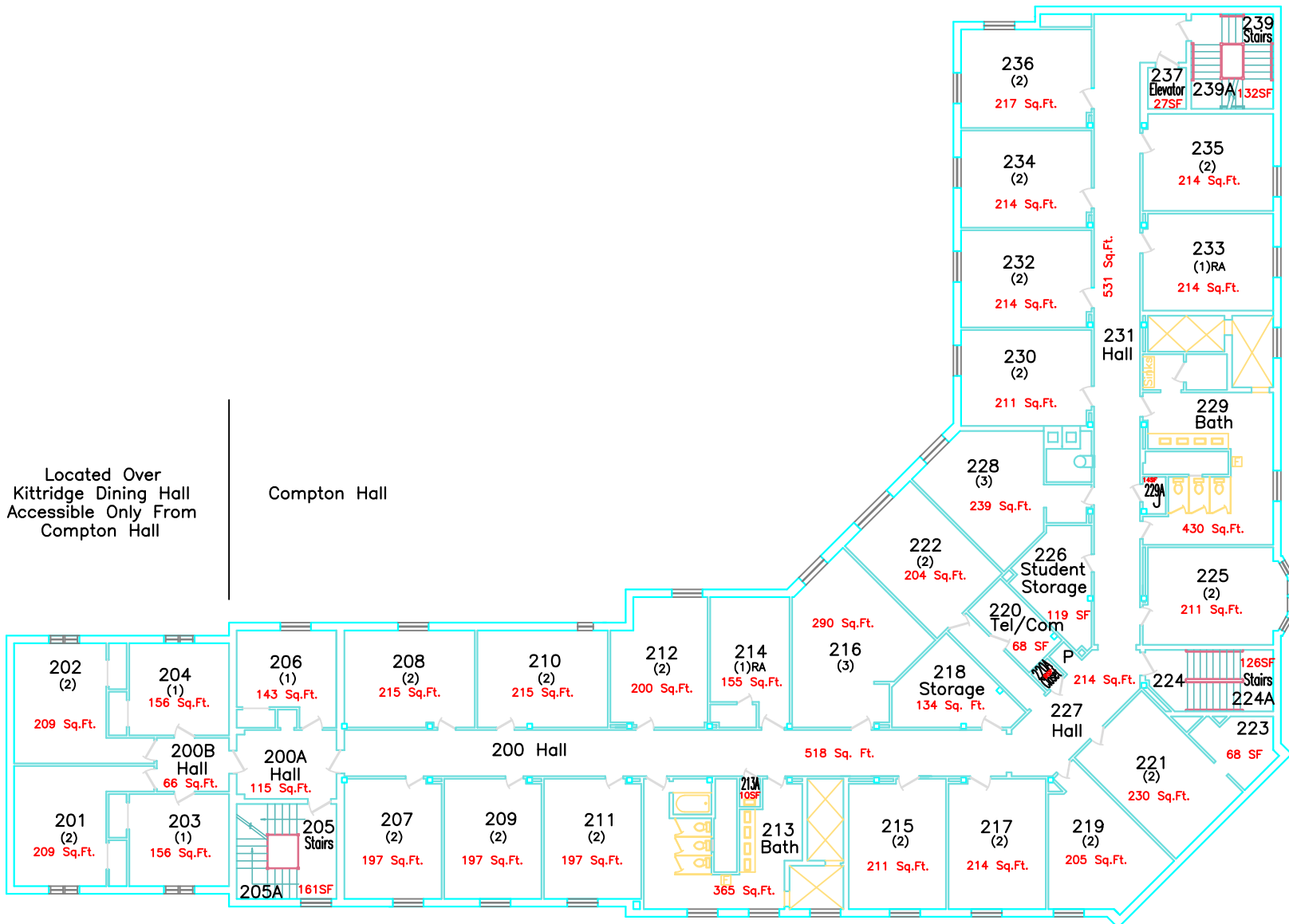




Date	January, 2008	Sheet	
Project	BINDER	2 OF 5	
Scale	1:6 - (1:20)		
Building Designation COM			
No.	Revision/Issue	Date	

COMPTON HALL
First Floor
1327 Beall Ave.



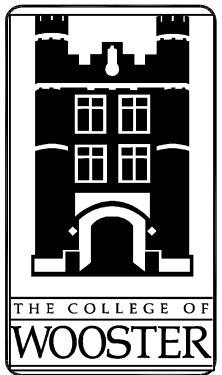
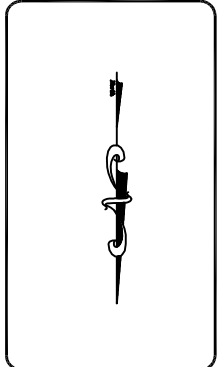


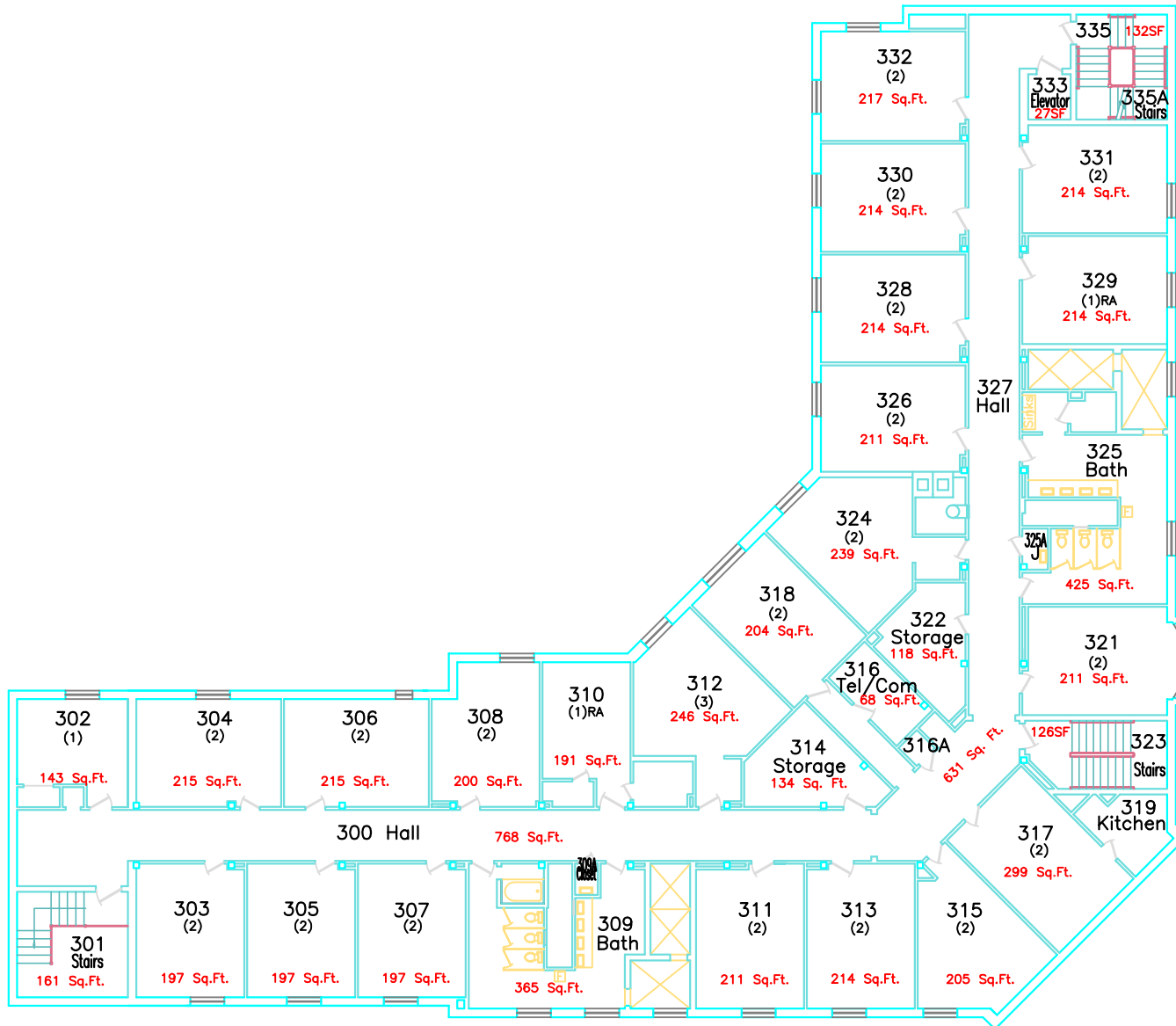
Located Over
Kittridge Dining Hall
Accessible Only From
Compton Hall

Compton Hall

Date	January, 2008	Sheet	
Project	BINDER		3 OF 5
Scale	1:6 ~ (1:20)		
Building Designation COM			
No.	Revision/Issue	Date	

COMPTON HALL
Second Floor
1327 Beall Ave.





Date	January, 2008	Sheet	
Project	BINDER	4 OF 5	
Scale	1:6 ~ (1:20)		
Building Designation COM			
No.	Revision/Issue	Date	

COMPTON HALL
Third Floor
1327 Beall Ave.

