

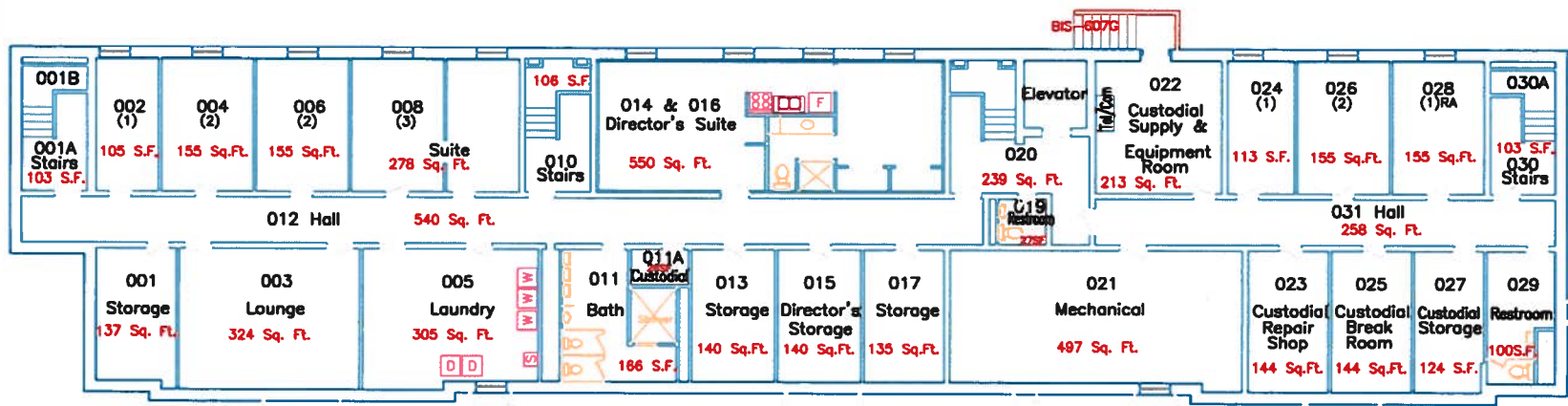
ALL GENDER

ALL GENDER

ST FLOOR

ALL GENDER

ANUNCIATOR



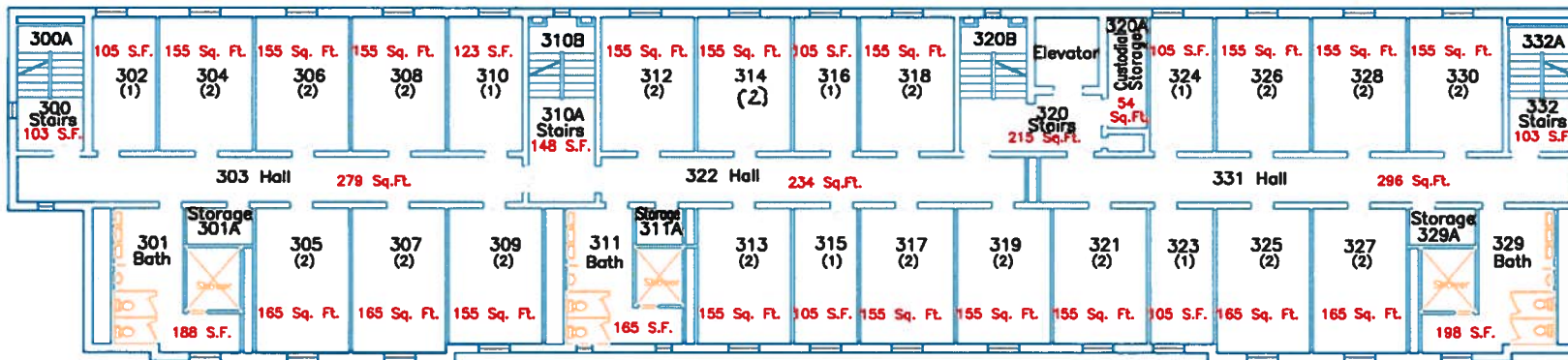
MALE

BASEMENT

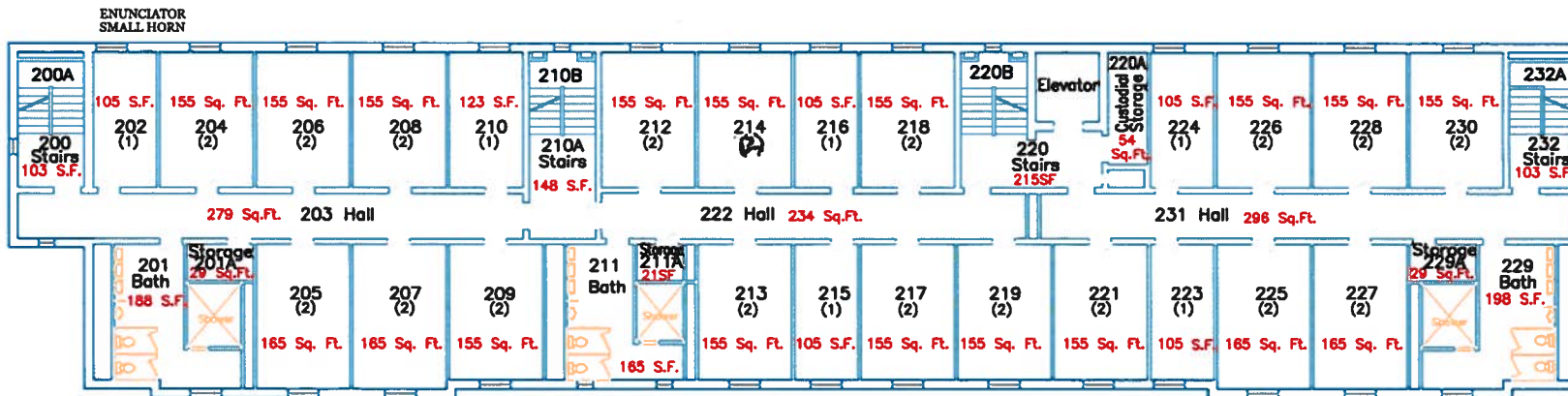
Rev	1	Rev	
Date	January, 2008		
Project	BINDER	Sheet	1 OF 3
Scale	1/8" = (1:20)		
Building Designation BIS			
No.	Revision/Issue	Date	

BISSMAN HALL  
Basement-First Floor  
1330 Beall Ave.





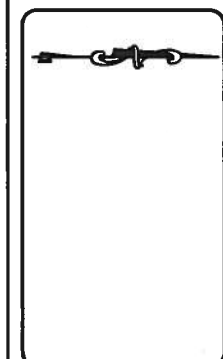
THIRD FLOOR

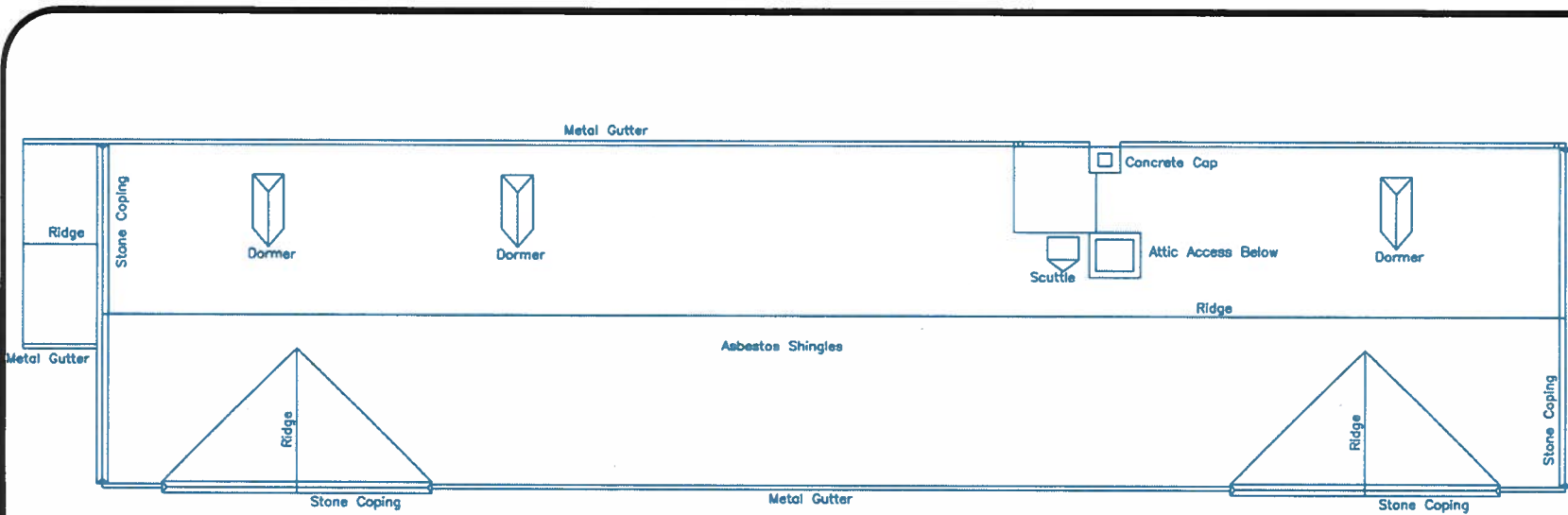


SECOND FLOOR

Rev January, 2008	Date
By BINDER	2 OF 3
Scale 1/8" = (1:20)	
Building Designation BIS	
No.	Date
Revision/Issue	

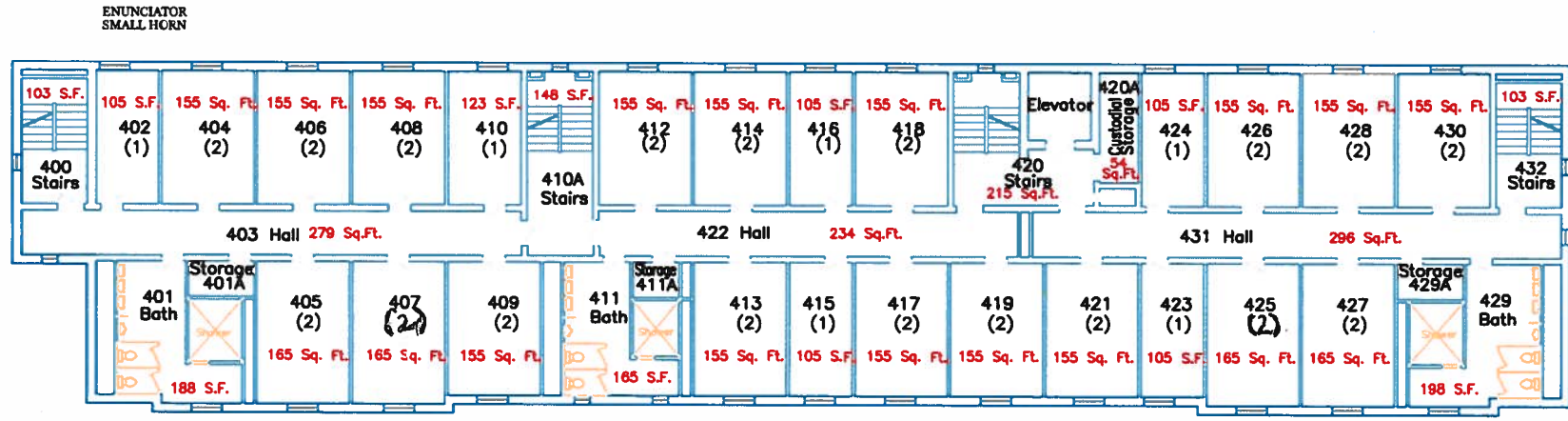
**BISSMAN HALL**  
Second & Third Floors  
1330 Beall Ave.





ROOF

ATTIC



FOURTH FLOOR

Rev	January, 2008	Sheet	
Project	BINDER	Page	3 OF 3
Scale	1:6 - (1:20)		
Building Designation BIS			
No.	Revision/Issue	Date	

**BISSMAN HALL**  
Fourth Floor & Roof  
1330 Beall Ave.

