



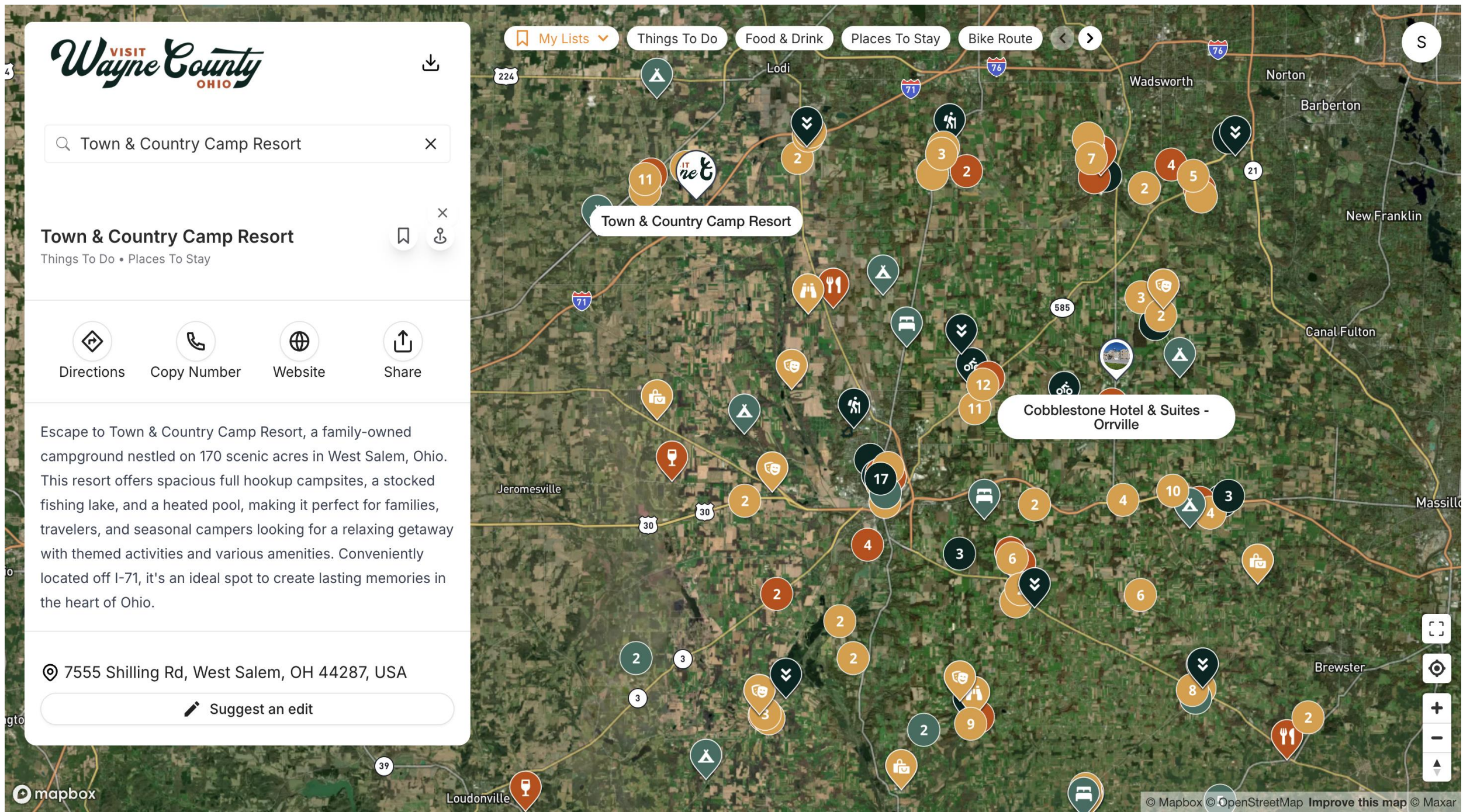
# Wayne County Convention & Visitors Bureau

Saidamir Osimov '27, Benjamin Roel '28, Faiaz Azmain '26  
Advised by Ryan Ozar, Hamed Goharipour

Through the AMRE program, our team worked with the Wayne County Convention and Visitors Bureau to collect detailed info on 300+ new tourist locations. We compiled data like addresses, photos, and descriptions, then delivered it to the Wander Map team to enhance their interactive tourism map of Wayne County.

## OVERVIEW

This summer, our AMRE team collaborated with the **Wayne County Convention and Visitors Bureau** to develop **Wander Map**, an interactive digital map showcasing local attractions. Our task was to research and gather detailed information such as names, addresses, coordinates, photos, and descriptions for tourist-friendly locations across the county.



Starting with a list of 360 locations from Shannon Carter, Executive Director of the Tourism Bureau, we added over **300 new locations** through our research. We compiled all the data into a structured spreadsheet and shared it with the Wander Map team to enhance the platform's content and usability.

## CLIENT

Wayne County Convention and Visitors Bureau



## ACKNOWLEDGEMENTS

Special thanks to our advisors who were always available with feedback and guidance. Thank you to the Harbage Endowed Fund, the Grace B. Jones Foundation, the Donald and Alice Noble Foundation, and the College of Wooster for their generous support in making this project possible.

## EXPERIENCE

Our team gained hands-on experience in both technical and field-based work throughout this project. We used several tools and APIs such as the **Google Places API** to collect location data and the **Google Gemini API** to help generate descriptions. We worked extensively with **Python (using pandas)** to clean and organize the data and used **Excel** to compile and manage the information for over 600 locations. In addition to our technical efforts, we went on multiple **field trips around Wayne County**, taking photos and collecting details for lesser-known places with little to no online presence. This well-rounded experience allowed us to apply both analytical and creative skills while contributing to a project that supports Wayne County's tourism and local economy.



## CONCLUSION

By the end of the project, we successfully **gathered and organized detailed information on over 600 locations** across Wayne County. This data is now **live on Wander Map**, making it accessible to tourists, locals, and anyone interested in exploring the area. In addition to data collection, we **created marketing materials** to help promote Wander Map throughout the County. We also wrote a **30+ page final report** documenting our experience using the Wander Map software, our data collection process, and our reflections on working with real-world clients and tools. Our work will continue to support tourism and local visibility in Wayne County even after the project's conclusion.