

Bridging the Divide: Understanding and Alleviating Diasporic Tensions between African Immigrants and African Americans

Emily Nyeswa

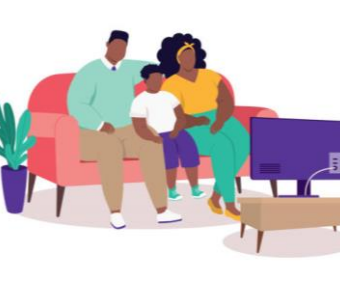
(Advised by Dr. Amber L. Garcia, Psychology)

INTRODUCTION

This study examined the relationship between African Americans and African immigrants. Based on the **common ingroup identity model**, I tested whether priming a superordinate identity emphasizing shared fate could improve intergroup attitudes compared to priming salient subgroup identities.



Intergroup relations research looks at how individuals from different social groups perceive and behave toward one another, a lens essential for understanding the tension and potential solidarity between African Americans and African immigrants (Tajfel & Turner, 1979).



Messaging about racial and ethnic groups, whether through media or family socialization, reinforces stereotypes that shape intergroup perceptions (Tormala & McKenzie, 2020).



Acculturation theory provides a framework for understanding how African immigrants navigate between their heritage cultures and Black American culture (Sam & Berry, 2010).

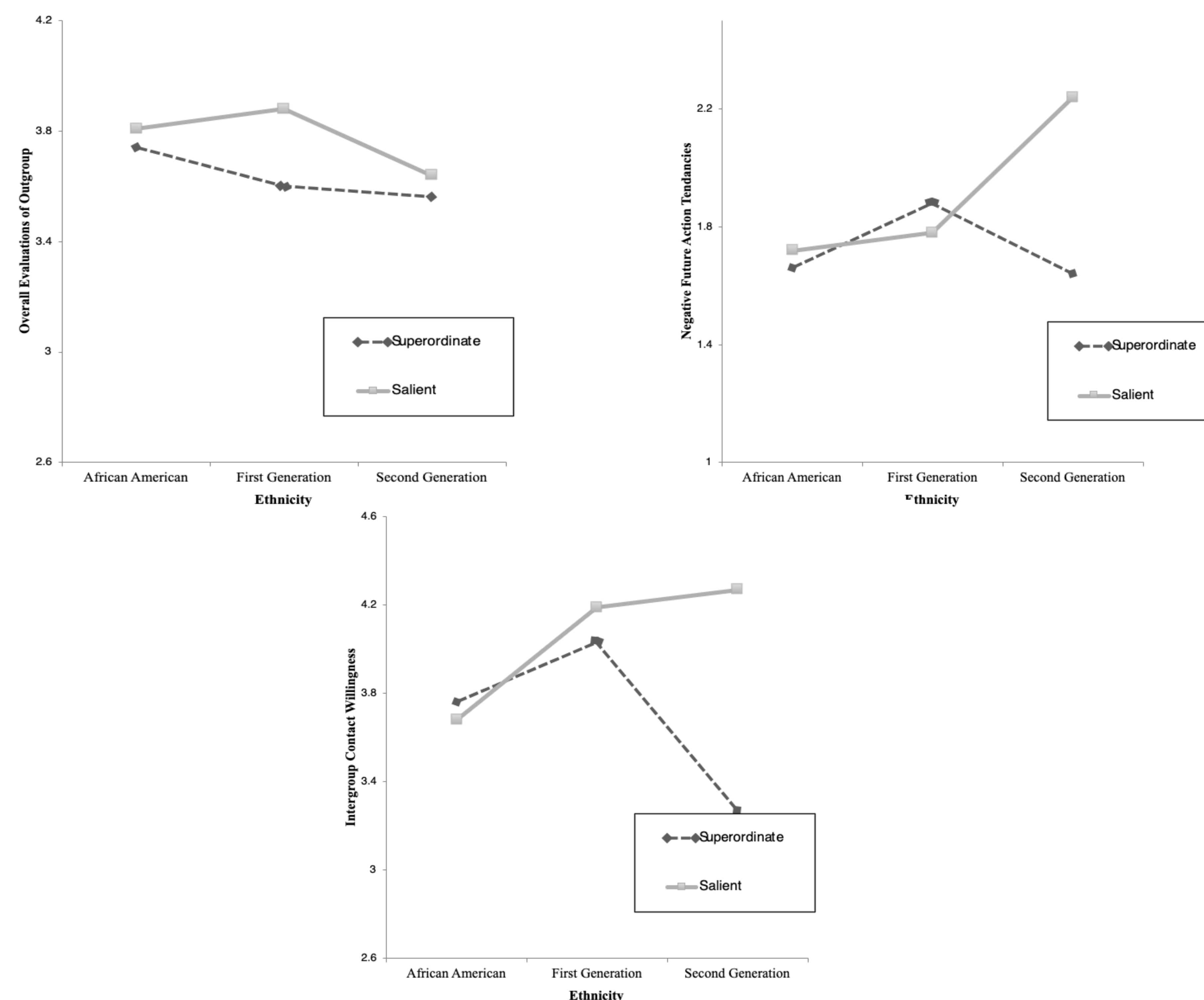
METHOD

Participants included African Americans, first and second-generation Africans ($n = 189$).

Measures:

- **Stress** (Cohen et al., 1983)
- **Race-Related Socialization** (Hughes & Chen, 1997)
- **Intergroup Contact** (Karataş et al., 2023)
- **Outgroup Evaluations** (Wright et al., 1997)
- **Future Contact Intention** (Mackie et al., 2000)
- **Intergroup Contact Willingness** (Esses & Dovidio, 2002)

RESULTS



HYPOTHESES

H1: Compared to a salient subgroup identity prime, a superordinate identity prime will lead to more positive outgroup evaluations, stronger future contact intentions, and greater intergroup contact willingness.

H2: African Americans will report more positive outgroup evaluations, stronger future contact intentions, and greater intergroup contact willingness toward African immigrants than African immigrants will toward African Americans.

H3: Prime condition and participant ethnicity will interact to influence the DVs.

H4–H6: Promotion of mistrust, cultural socialization, and bias preparation will moderate the relationship between ethnicity and outgroup evaluation.

RESULTS AND CONCLUSION

- Significant main effect of ethnicity on intergroup contact willingness: African American participants ($M = 3.69$) reported lower willingness to engage with African immigrants than first-generation ($M = 4.16$) or second-generation immigrants ($M = 4.31$).
- A significant interaction revealed that higher promotion of mistrust socialization predicted more negative outgroup evaluations for second-generation immigrants ($p = .03$), but not for first-generation immigrants or African Americans.
- Contrary to prior literature suggesting African immigrants are more resistant to connection, African Americans reported lower willingness to engage, possibly due to feeling unrecognized or minimized by incoming groups.
- Second-generation immigrants remain vulnerable to parental mistrust socialization despite being raised in the U.S.A., highlighting the influence of early messaging.

FUTURE DIRECTIONS

Future interventions must move beyond one-size-fits-all approaches and instead prioritize community voices, qualitative methods, and targeted strategies that address the unique concerns of African Americans and African Immigrants.



Please contact enyeswa26@wooster.edu for additional information